



Welcome to St Thomas of Canterbury EYFS



St Thomas of Canterbury EYFS

Staffing Structure 2021-22

Nursery E - Miss East
Nursery W - Miss Ward

1 TA3 & 2 TA's
1 TA3 & 2 TA's

Reception T - Mrs Tuson
Reception L – Miss Leveridge

2 TA's
2 TA's

HLTA – Mrs Taylor (Speech & Language)

Miss Annie – EYFS cook
Miss Chris & Miss Showa – Lunchtime classroom assistants
Lunchtime welfare staff (outdoors)

Mrs Quigley– School Administrator
Miss Mathias - Family Support/Attendance Officer



What your child will need for Nursery

- Yellow polo shirt
- Navy blue jumper or cardigan (available with school logo)
- Navy or grey jogging bottoms or grey school trousers/shorts in summer
- Grey skirt or pinafore dress
- Warm, waterproof coat for travelling to and from school
- Comfortable closed toe shoes – preferably with velcro!



All uniform can be purchased from Buy & Save schoolwear

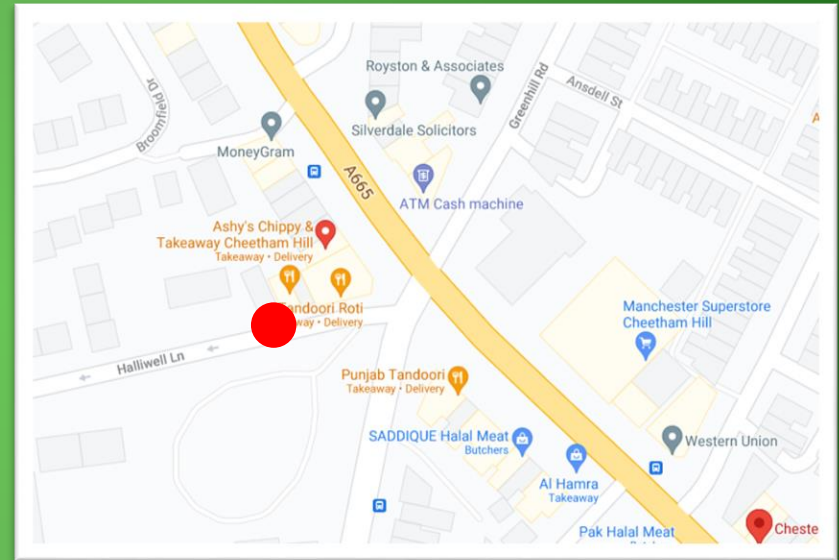
School Uniform

Buy and Save Superstore

School Wear Specialists
Unit 12 Progress Building
491 Cheetham Hill Road
Manchester
M8 9HY

Near HSBC Bank

Located at the Waterloo Road/ Cheetham Hill Road Junction



Uniform can also be purchased from supermarkets and other stores.

What your child will need for Nursery

Wellington Boots – Please ensure your child’s name is written inside each boot with a permanent marker!



Children will not need a book bag/backpack whilst they are in Nursery, all letters will be handed to parents at the door.

Instead, parents will receive a ‘Fill Me Up Wallet’ to return to school with spare clothes inside. The wallets will easily fit into their school trays & will be sent home to be replenished when needed. These will be given out at during **home visits in July or September.**

The ‘Fill Me Up Wallet’ should contain;

- Underwear – several pairs!
- Socks – several pairs
- Trousers
- Top

Name: My ‘fill me up wallet’ needs to be replenished with underwear!	Name: My ‘fill me up wallet’ needs to be replenished with socks!
--	--



NAMES IN EVERYTHING - with permanent marker or labels!

School Meals

School meals for Nursery Children is £10.50 per week payable via our online payment method ParentPay.

All children eat in their classroom and are offered a choice of hot meal, vegetarian option or sandwich.

Meals are displayed daily on the classroom door.



Universal free school meals are provided for all children in Reception, Y1 & Y2, regardless of income. **If you think you may be eligible for free school meals for nursery children please follow the link attached to the admission forms.**

<https://www.cloudforedu.org.uk/ofsm/sims/>

If unsure, the school office would be happy to assist with any applications

Registering for free meals could raise an extra £1,300 for your child's school, to fund valuable support like extra tuition, additional teaching staff or after school activities.

Essential Paperwork before your child starts school

You will receive your admission pack in the post if you have not already received it. Enclosed is a letter with the return deadline for documents and supporting information.

Please return all documents by Thursday 5th May

Out of school care

We offer in-house wrap around care to support working parents with childcare.

Breakfast club 8.00-8.55am - £2.00 per day

After school club 3.15-5.55pm £7.00 per day

If you would like a place for your child, places can be booked in September once your child has completed the phased transition



A circular button with a blue gradient and a silver border, containing the text "Pay Online" in bold black font.

**Pay
Online**

Parent Pay

ParentPay is the school online payment system that lets you make secure online payments by credit and debit card.

Hundreds of thousands of parents use ParentPay to pay school online. It's used to make cashless payments in schools for dinner money and activities like trips, clubs, music lessons, morning & after care.

In September the school office will issue you with your activation details.

You will have a secure online account, activated using a unique activation username and password.

You will be prompted to change these and to keep them safe and secure as your Username and Password for future logins.

If you have two or more children at a ParentPay school, you only need to activate one account to create your 'main account' and then add your other children via the **Add a child tab** on your home page

Please visit www.parentpay.com and activate your account via the **Account login** area on the home page of the site.

Any problems, please speak to the school office team!



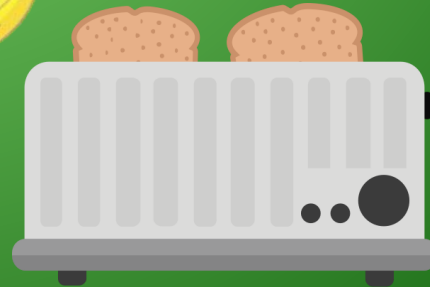
Snack

The children also have milk and snack each morning, which consists of a range of food for the children to try.

Snack is paid via ParentPay - £6 per half term

An example of weekly snack;

- Brioche
- Waffles
- Pitta and Hummus
- Cheesestrings
- Crackers and cream cheese
- Fruit is also available daily





Curriculum Enrichment

Parents are invited to make a small contribution to curriculum enrichment. The money is used to provide additional hands on activities such as baking, food tasting and cultural celebrations.

In Nursery, the children cook and taste different foods regularly as part of their learning to enhance class topics, develop motor skills and provide the children with real life experiences.

Our suggested donation is £3 per half term, this can be paid via Parent Pay

Our Class Page



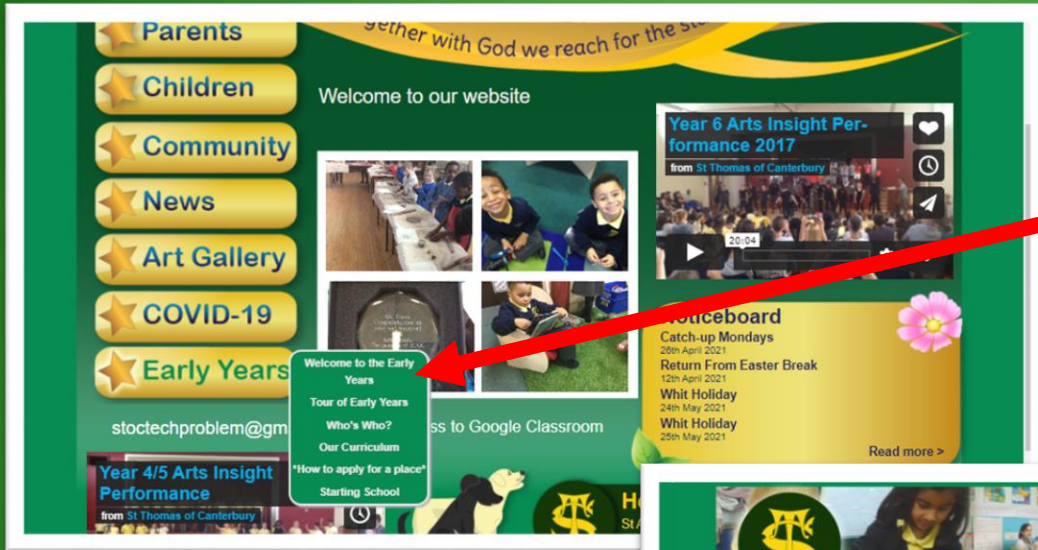
Our school website is a valuable tool for parents, pupils and teachers.

It gives up to date information about all that us happening in school and has the Parent Pay link.

We use it as an opportunity to share with you the exciting things we've being doing in Nursery. We will also use it as a tool to help you to support your child at home e.g. activities & online games



<http://www.stthomasofcanterburyprimaryschool.co.uk>



You can find the Early Years page here

You can find the Nursery and Reception class pages here



The Curriculum

Prime Areas

Personal, Social, Emotional Development	Physical Development	Communication and Language
Self Regulation Managing Self Building Relationships	Gross Motor Skills Fine Motor Skills	Listening, Attention and Understanding Speaking

Specific Areas

Literacy	Mathematics	Understanding the World	Expressive Arts and Design
Comprehension Word Reading Writing	Number Numerical Patterns	Past and Present People, Culture and Communities The Natural World	Creating with Materials Being Imaginative and Expressive

Indoor & outdoor play

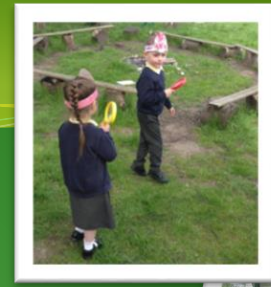
We have an open door policy & encourage free flow play in the indoor & outdoor environment

We enjoy experiencing seasonal weather

Waterproof trousers and coats provided by school

It is important to dress your child appropriate for the weather

We store your child's wellies in school



Forest School

Children attend outdoor learning session at forest school to enrich class topics & support personal, social & emotional development.



Our forest school venue is located in the secret garden behind the Year 6 annex.

Topics and experiences



People who help us

My family

Seasons

Dinosaurs

Nursery rhymes

Superheroes

Weather

Celebrations

Transport

Animals

Houses & Homes

Different Cultures

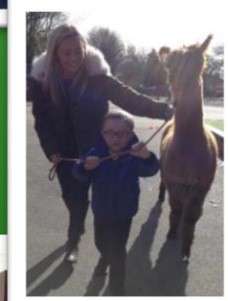
Life Cycles

Food

Clothes

Traditional Tales

Child Centred Learning



Speaking & listening

The main focus of EYFS is speaking, listening & understanding

Supporting speaking and listening in school

- We encourage participation through songs, encouraging them to join in with familiar songs & actions
- The children participate in whole class and group discussions
- Language sessions to secure early language concepts e.g. Food, transport, people, places
- Targeted WELLCOMM interventions
- Speech and Language interventions to develop language functions e.g. pronouns, prepositions, verbs
- Can Do Music sessions
- Daily Phonics
- Role play & small world areas
- Book talk
- Lending Library

Supporting speaking & listening at home

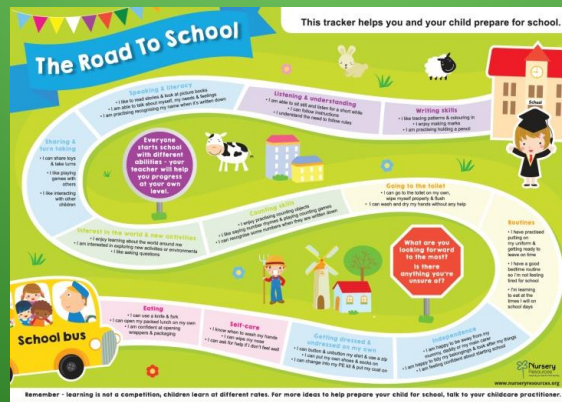
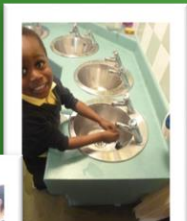
- Play simple games like guess who, eye spy
- Sharing stories together
- Singing nursery rhymes, counting songs, action songs etc
- Role play – making tea, playing shop, looking after teddies
- Commenting on what you are doing
- Bath time



What else can you do to help?

Support your child to;

- Dress themselves with increasing independence
- Feed themselves with a fork and spoon, if confident begin to introduce cutting skills with knife
- Look after themselves on the toilet and recognise their toileting need
- Respond and give eye contact when their name is used
- Develop gross motor skills through outdoor play e.g. climbing, running, jumping and balancing
- Read books together and talk about the illustrations
- Develop the children's awareness of number through practical activities e.g. Counting as you go upstairs or recognising numerals in the environment (ASDA, door numbers)



Dummy bin on the first day of school!

What next?

- Home visits in July & September
- Parent Workshops
- Meet the Teacher morning
- Transition with your child's Nursery setting (if attending)

Look out for letters regarding these events in the coming weeks



Follow us on Instagram @stoceyfs

How can Early Help support you to get your child school ready?

- Groups and activities e.g. stay and plays (timetable)
- Support your understanding of your child's development (Five to Thrive/Real/Parenting Support)
- Give you Tips and Hints (Road to School Readiness)

Contact or come and visit us:

Broughton Hub: 0161 778 0080

Langworthy Cornerstone: 0161 212 4480